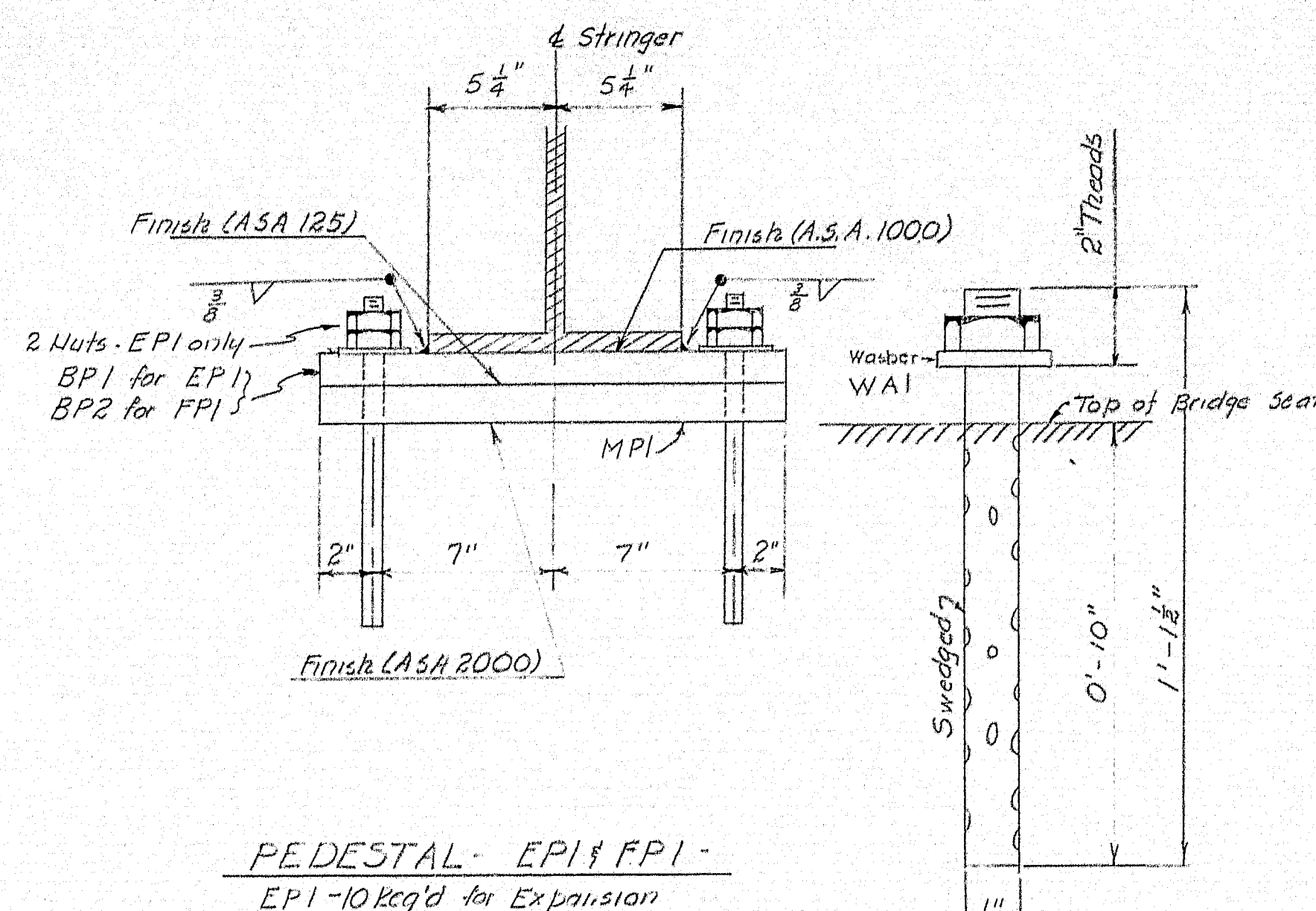


NOTES:
 Shop Conn: Welded
 Field Conn: Temp. M. Bolts - Welded
 Paint: Per State of Maine Specs.
 Stud Shear Conn: Welded
 Beams and Cover Plates for Span No 2
 shall conform to specifications A STM.
 Desig. A 373.

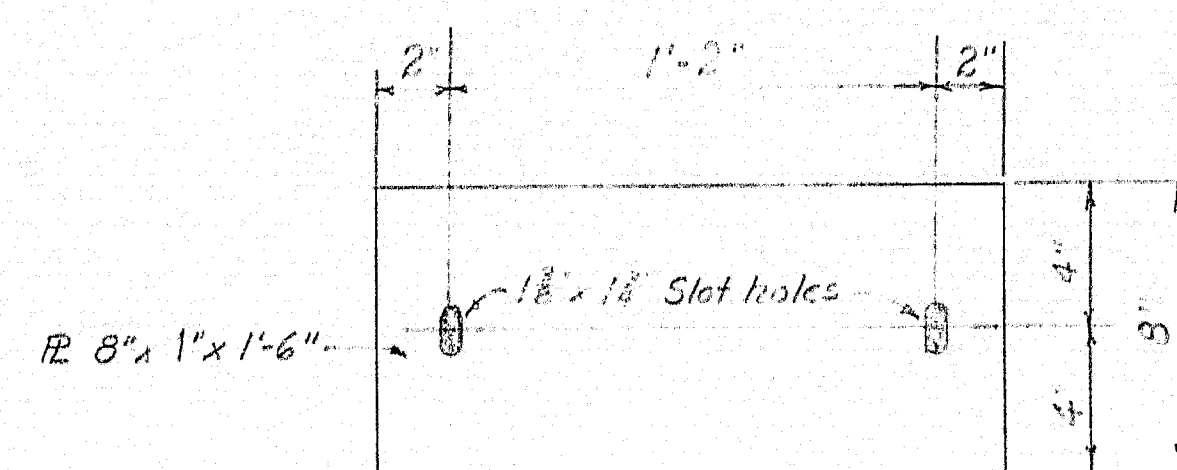
Bearing Plates to be field welded -
 ERECTION DIAGRAM - C.P. DETAILS
 Bancroft & Martin Rolling Mills Company
 South Portland 7, Maine
 WILSON STREAM BRIDGE
 over WILSON STREAM
 WILTON, MAINE
 CUSTOMER: W. H. HILLMAN INC.
 DESIGNER: Maine S.H.C. - Bridge Div.
 ORDER NO. Verbal DWG. NO. 60-601 E 1

DRAWN	GZ.	2-27-61
REVISION		
REVISION		
REVISION		

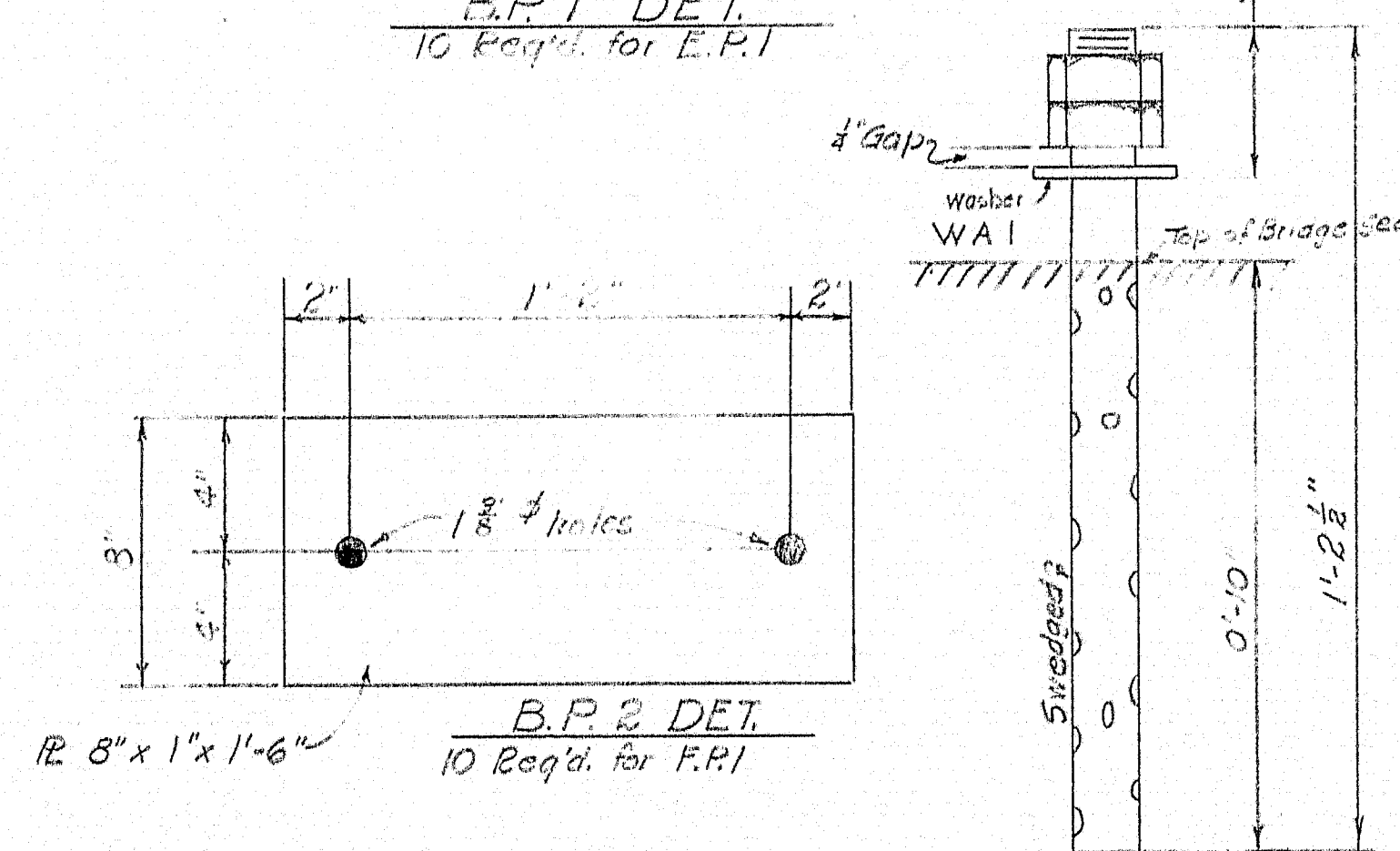


PEDESTAL - EPI & FPI -
EPI - 10 Req'd for Expansion
FPI - 10 Req'd for Fixed
FOR SPANS 1 & 3

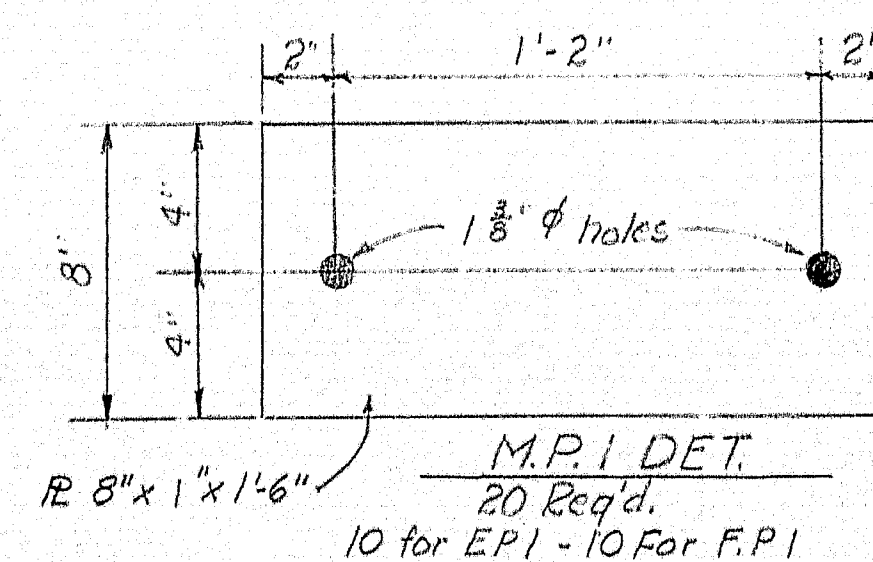
ANCHOR BOLT - AB1
20 Req'd for FPI
No paint-oil thds.



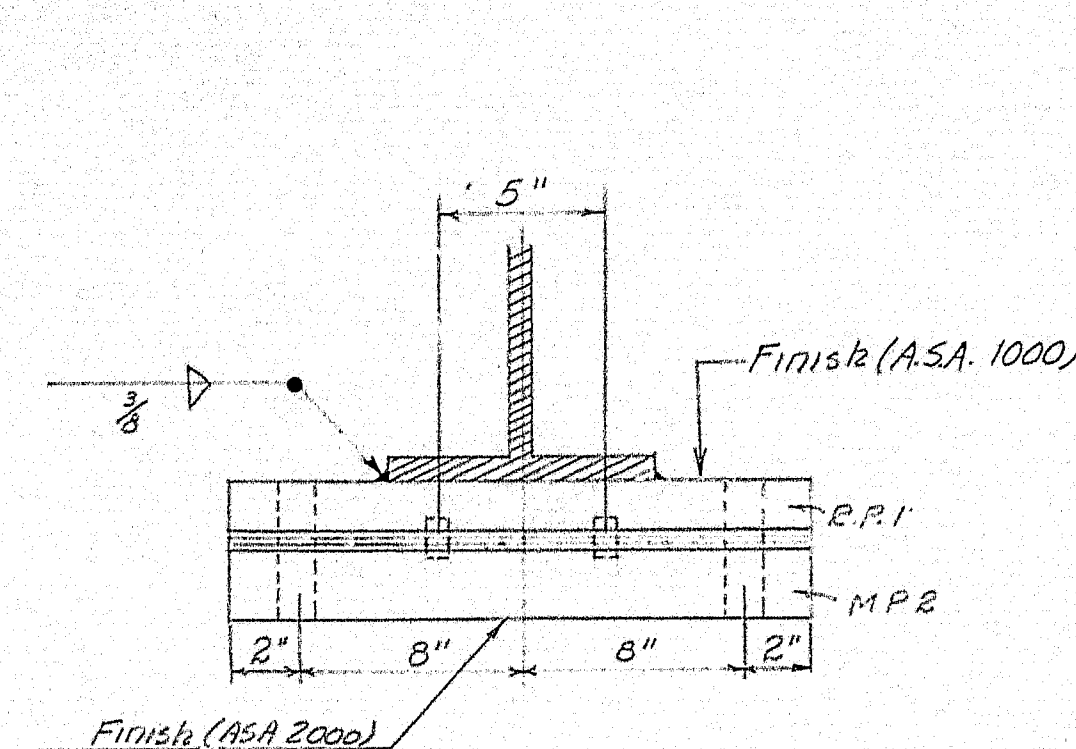
W.P. 1 DET.
10 Req'd for E.P. 1



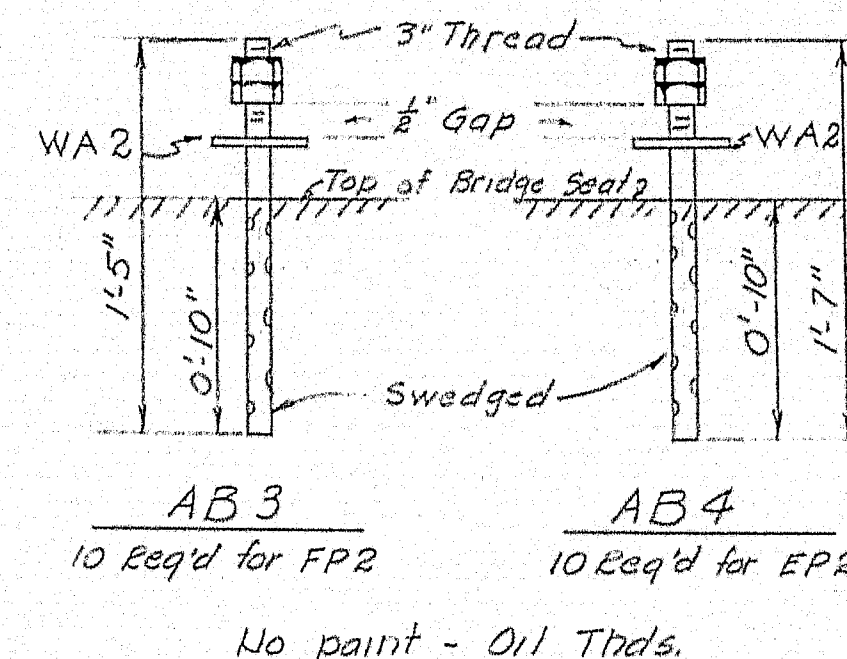
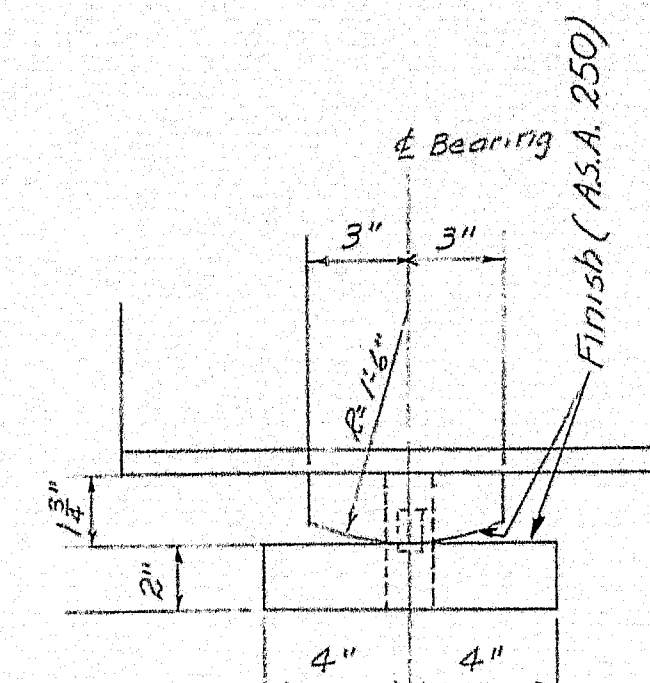
B.P. 2 DET.
10 Req'd for F.P. 1



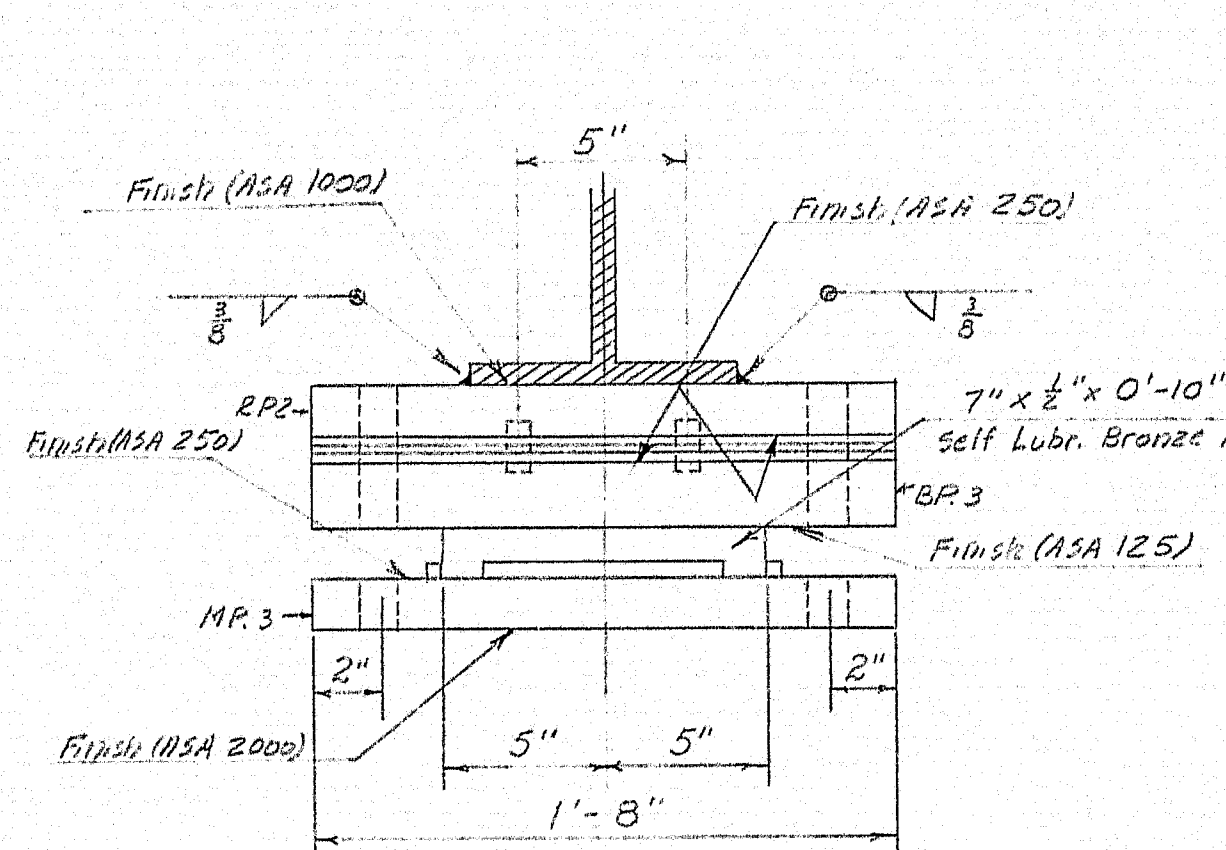
M.P. 1 DET.
20 Req'd
10 for EPI - 10 for F.P. 1



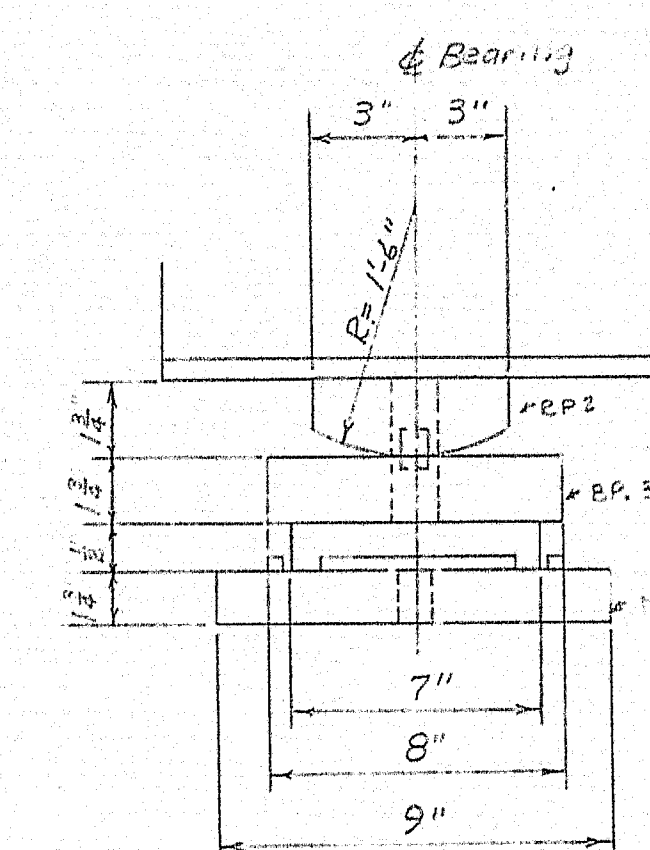
PEDESTAL - F.P. 2 - FIXED
For Span 2 - 5 Req'd.



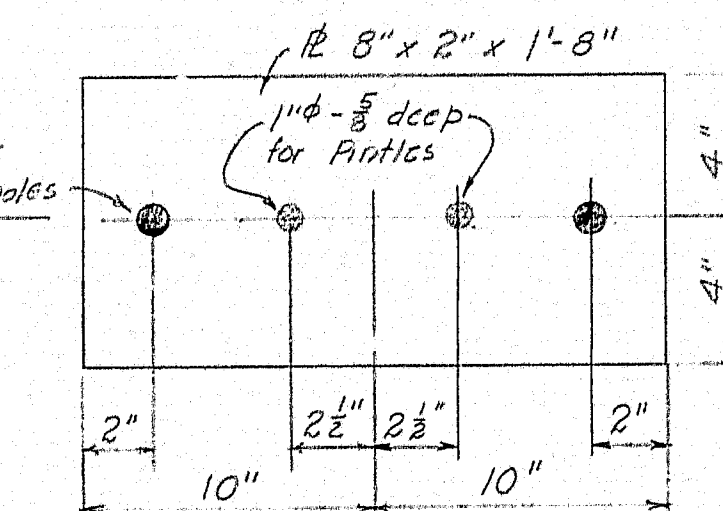
AB 3
10 Req'd for F.P. 2
AB 4
10 Req'd for F.P. 2
No paint - Oil Thds.



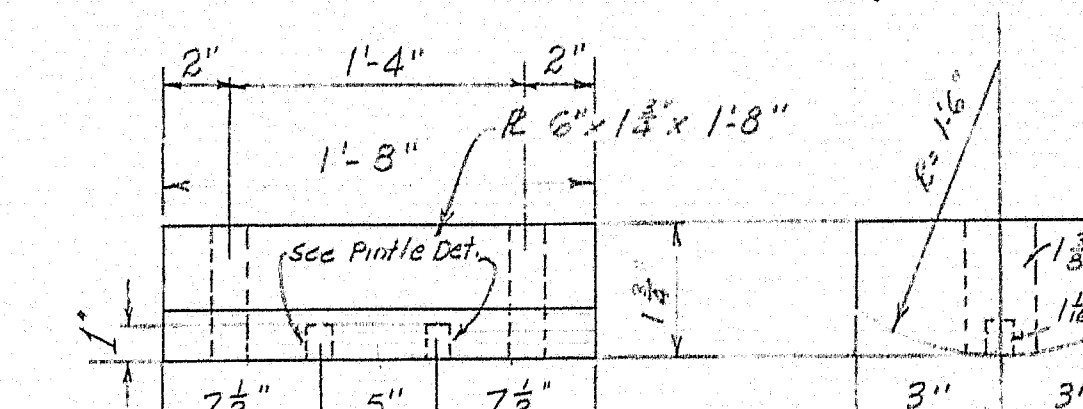
PEDESTAL EP2 - EXPANSION
For Span 2 - 5 Req'd.



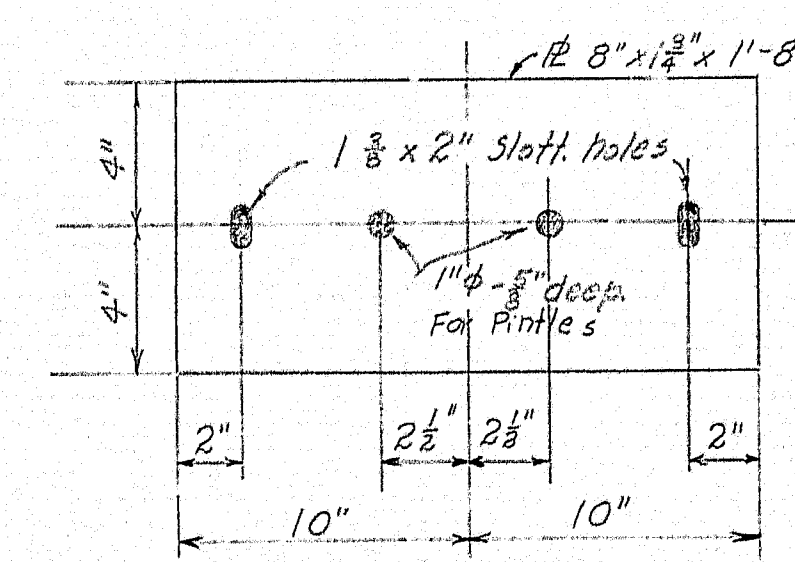
M.P. 3 DET.
5 Req'd for EP2



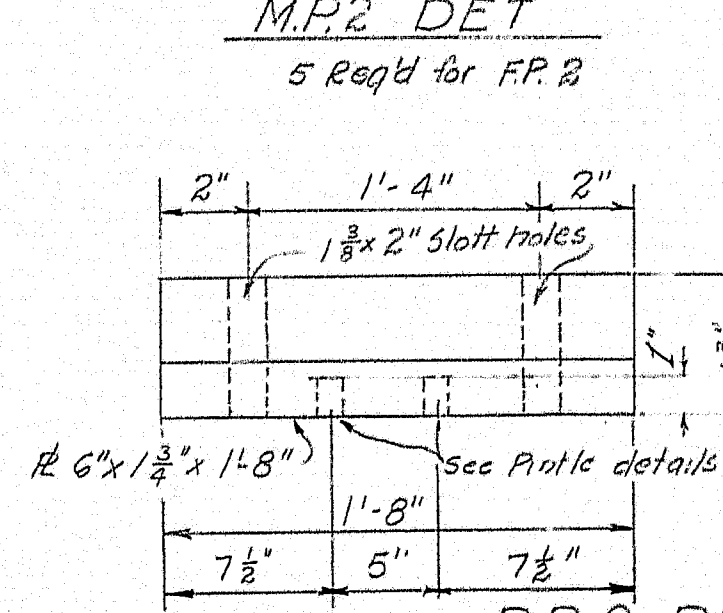
M.P. 2 DET.
5 Req'd for F.P. 2



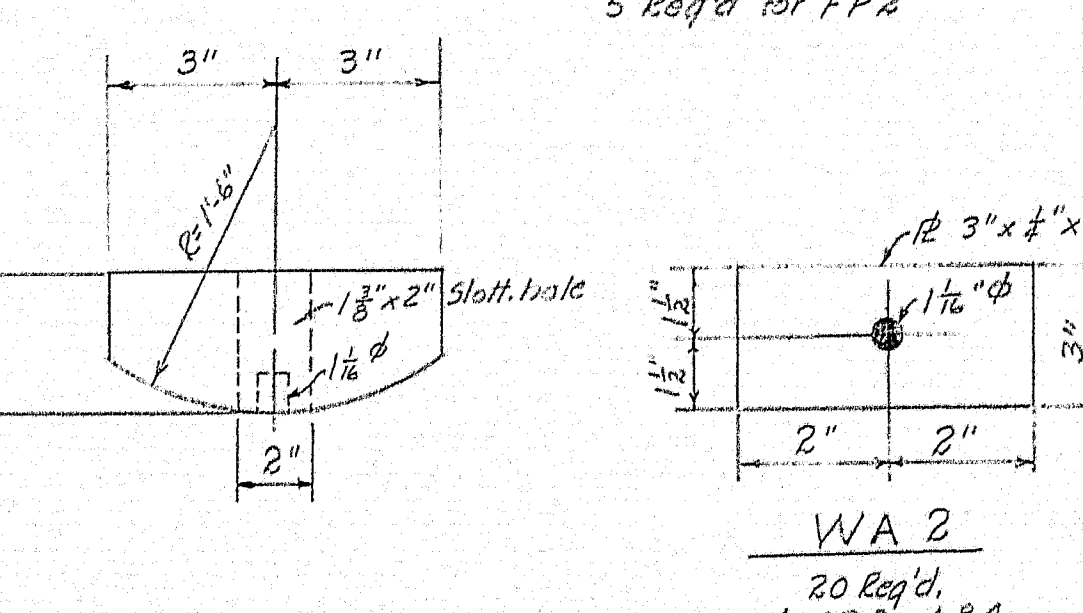
R.P. 1 DET.
5 Req'd for F.P. 2



B.P. 3 DET.
5 Req'd for EP2



R.P. 2 DET.
5 Req'd for EP2



WA 2
20 Req'd
for AB 3 - AB 4

Note: White Lead & Tallow on Surface marked ASA 125

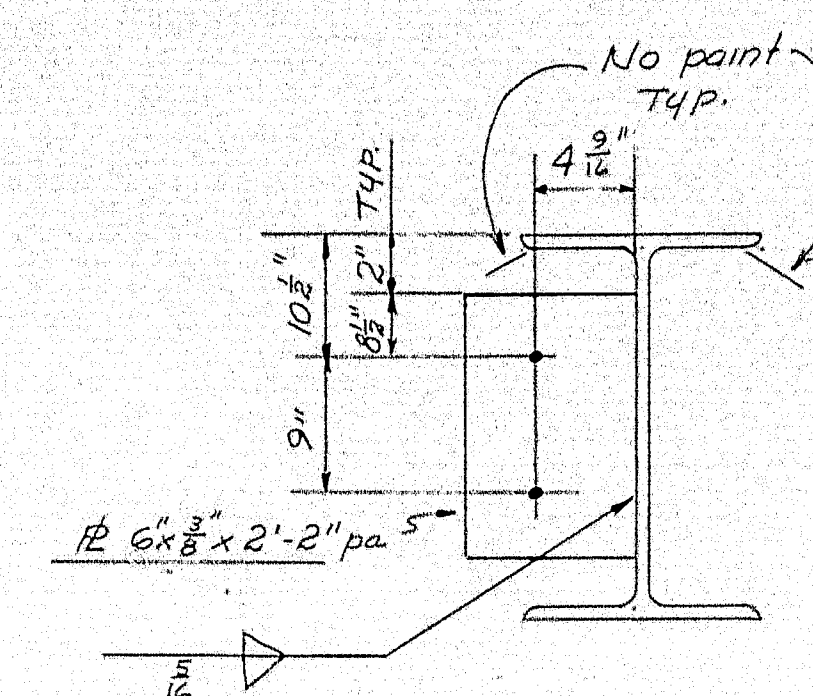
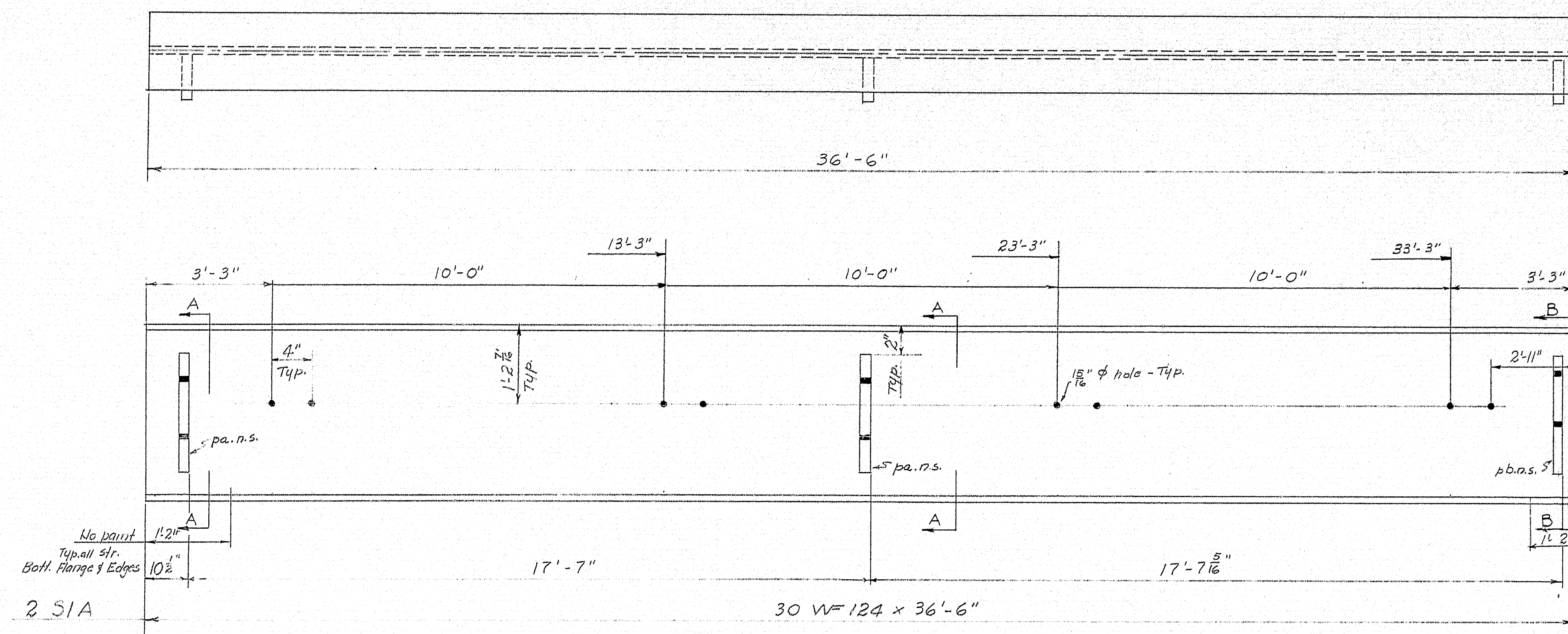
SHIP		BILL OF MATERIAL				DWG. NO. 60-601-5	
MARK	NO.	MARK	SHAPE	LENGTH	WT.	REMARKS	
EP1	5		R 6 x 1 1/2	1	8	24	
EP2	5		do	1	8	28	
BP1	10		R 8 x 1	1	6	11	
BP2	10		do	1	6	8	
BP3	5		R 8 x 1 1/2	1	8	12	
MP1	20		R 8 x 1	1	6	17	
MP2	5		R 8 x 2	1	8	8	
MP3	5		R 9 x 1 1/2	1	8	7	
	20	P	1" φ	0	1 1/2		
AB1	20		1/2" Anchor Bolts	1	1 1/2		swaged
AB2	20		do	1	2 1/2		do
AB3	10		do	1	5		do
AB4	10		do	1	7		do
	100	Wuts	1" Hex				
WA1	40		2 1/2 x 1/4	0	4	2	
WA2	20		3 x 1/4	0	4	1	
	10	Pa	1/2 x 1/4	0	8		
	10	Pb	do	0	5		
SB	5		7 x 1/2	0	10		Self Lubr. Bronze Plate ITEM 703-9 - 703-10

SHOP CONNECTIONS: Welded
FIELD CONNECTIONS: Welded
HOLES: As noted
PAINT: Red Lead per M.S.H.C. specs
except as noted.

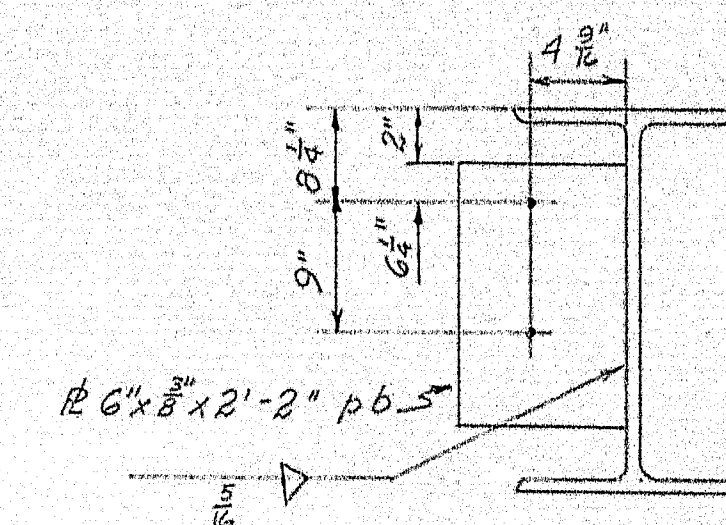
SEARING DETAILS	
Bancroft & Martin Rolling Mills Company South Portland 7, Maine	
WILSON STREAM BRIDGE over WILSON STREAM WILTON, MAINE	
CUSTOMER: W.H. Hinman Inc. DESIGNER: Maine S.H.C. - Bridge Div.	
ORDER NO. Verbal	DWG. NO. 60-601-51

DRAWN	GZ.	3-1-61
REVISION		
REVISION		
REVISION		

APPROVED 3-30-61

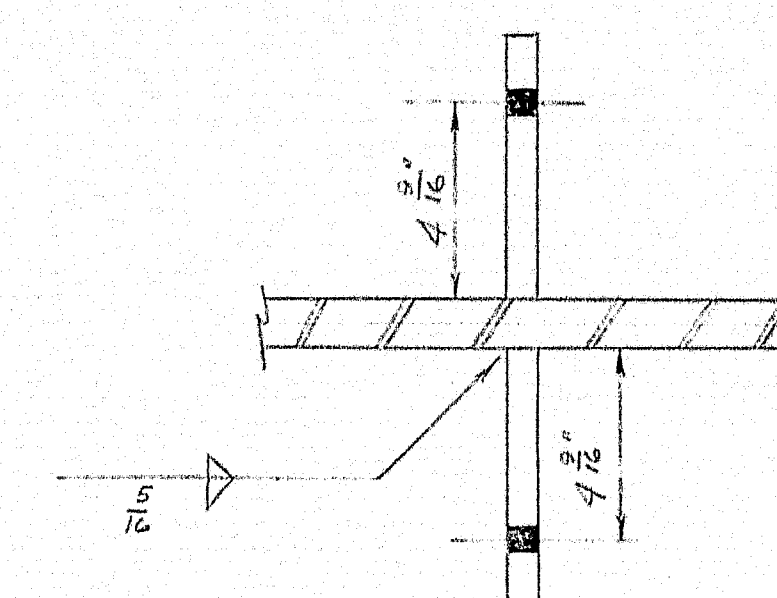


SECTION A-A



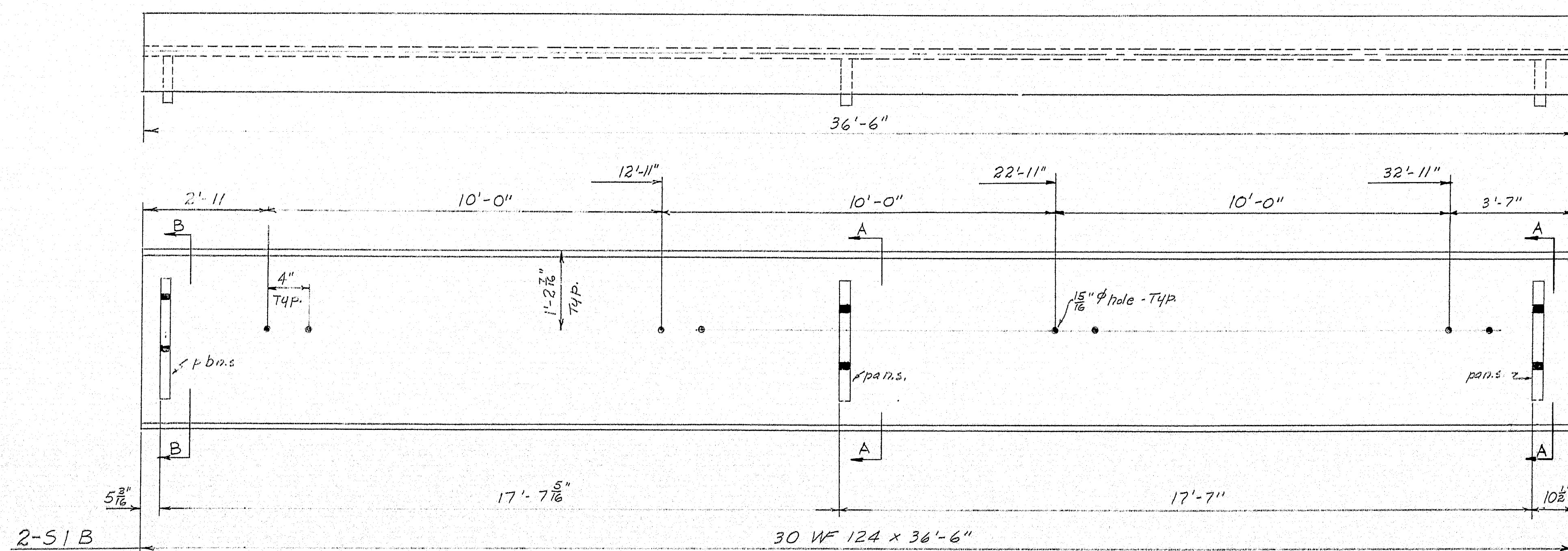
SECTION B-B

No paint on pa, pb



TYP. DIAPHRAGM PLATE DET.

NOTE: 1 5/16" holes in web of S1 and S3 for flanging Brackets to be plugged with 5/8" x 1 1/4" carriage bolts. Heads to be on outside; holes to be completely covered.



NOTES:
Holes not noted 1 5/16"
Paint: Red Lead per M.S.H.C. Specs.

See Dwg. S5 for bill of Material

STRINGERS

Bancroft & Martin Rolling Mills Company
South Portland 7, Maine

WILSON STREAM BRIDGE
over WILSON STREAM
WILTON, MAINE

CUSTOMER W.H. Hinman Inc.

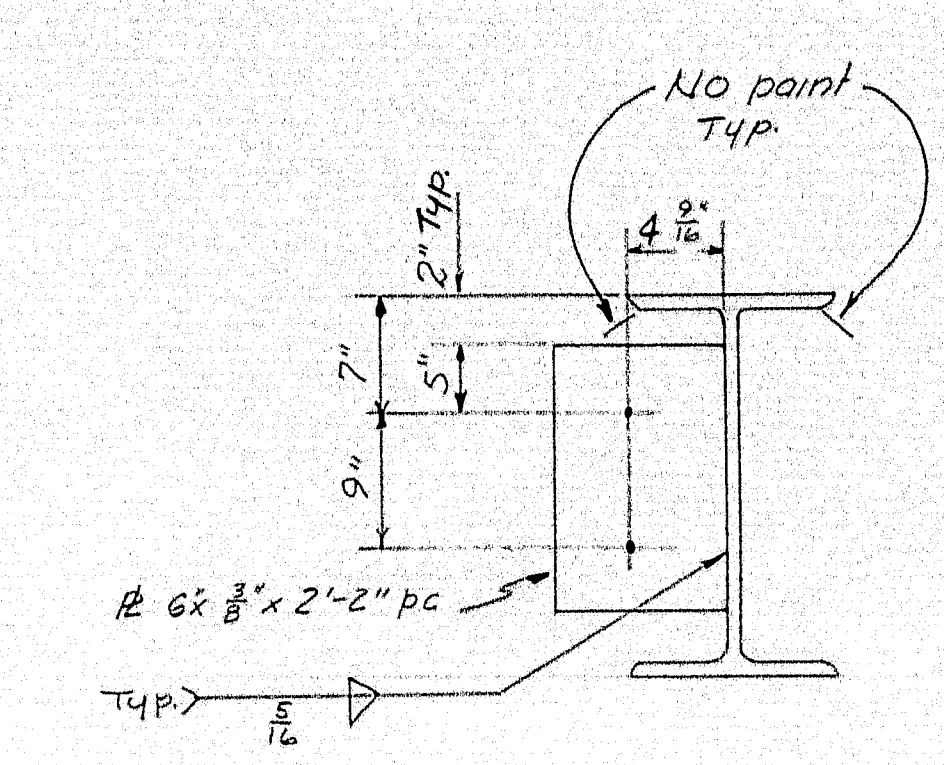
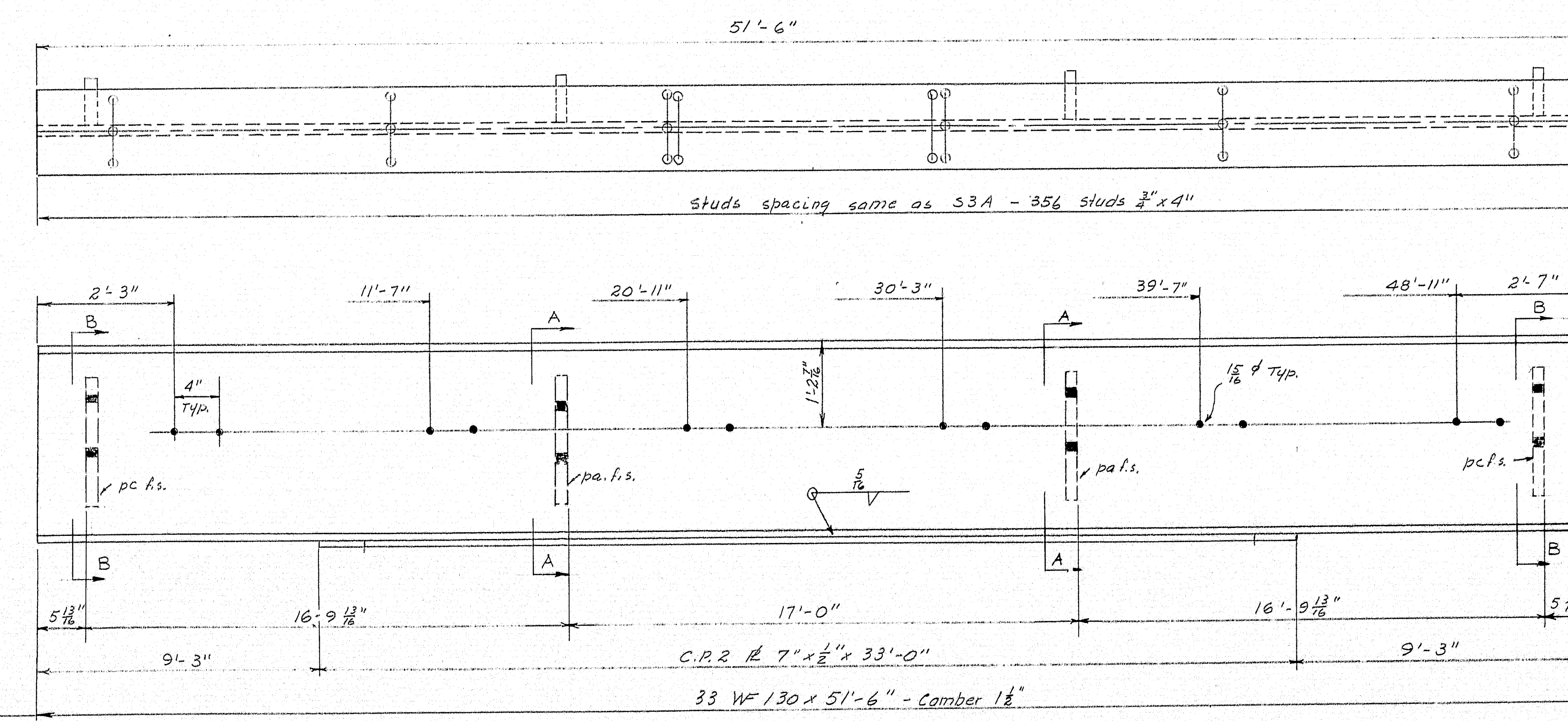
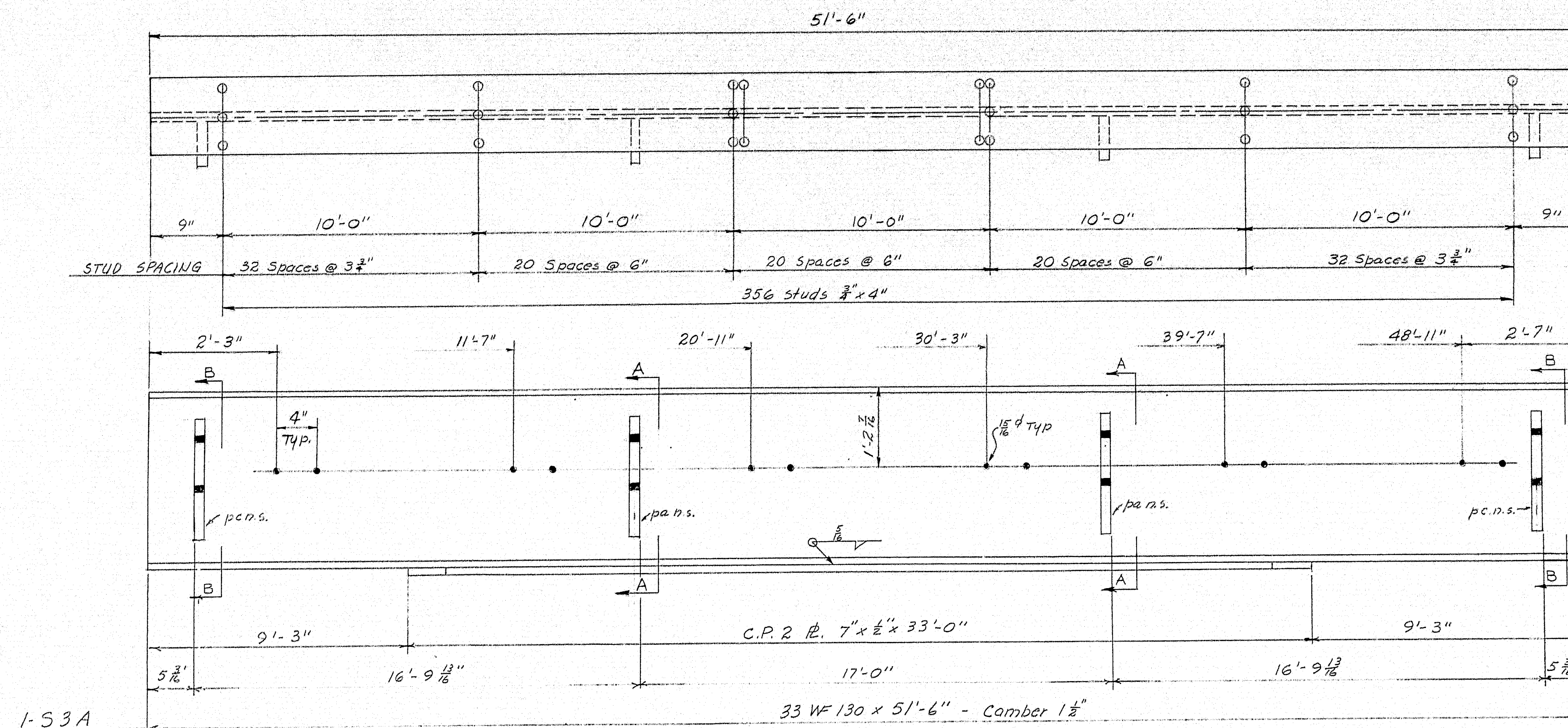
DESIGNER Maine S.H.C. Bridge Div.

ORDER NO. Verbal

DWG. NO. 60-601 S2

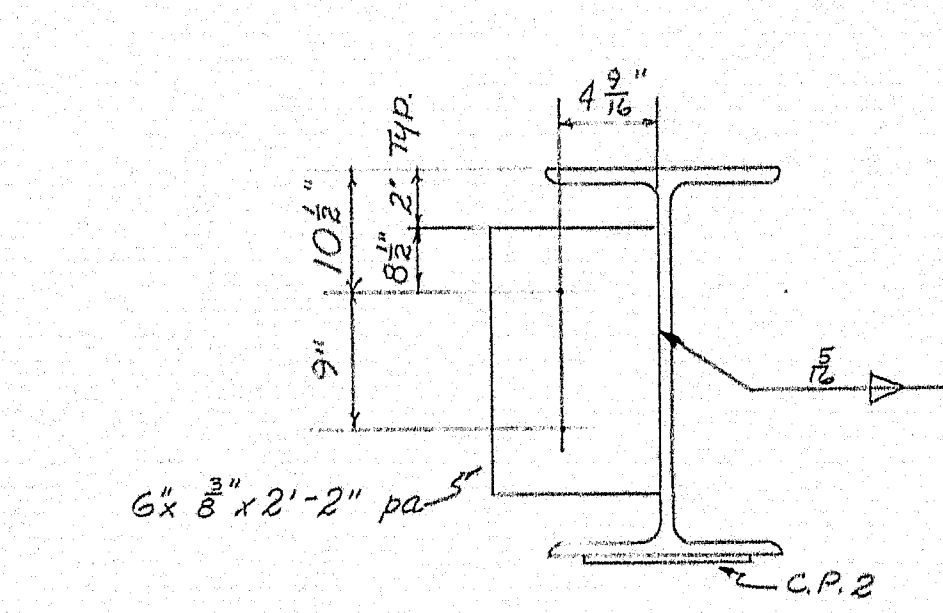
DRAWN	GZ.	3-2-61
REVISION		
REVISION		
REVISION		

80-192

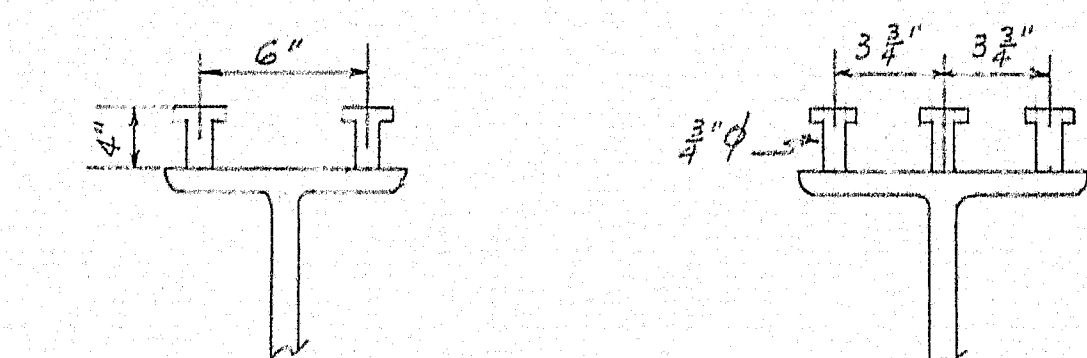


SECTION B-B

No paint on pa, pc.



SECTION A-A



TYPICAL SECTIONS STUD LOCATION
All studs 3/4" x 4" - 1780 Req'd.

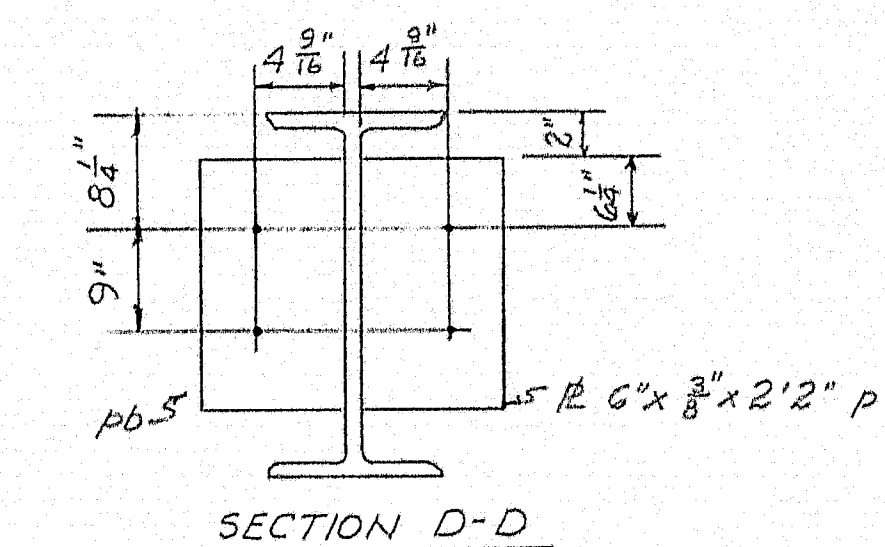
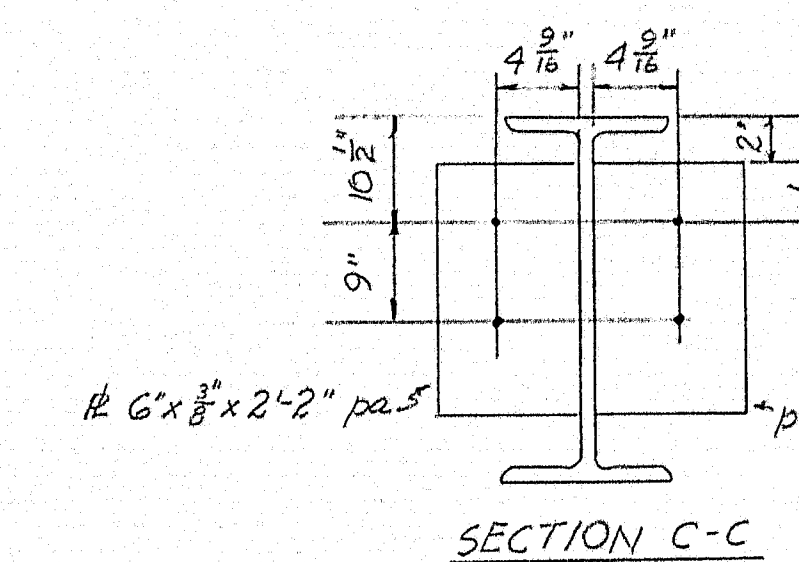
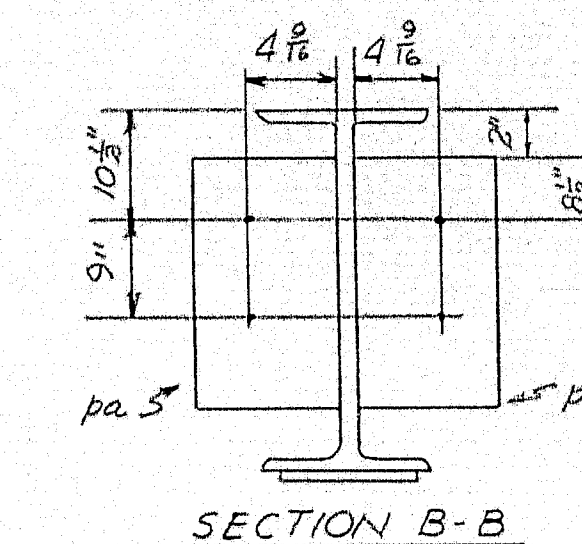
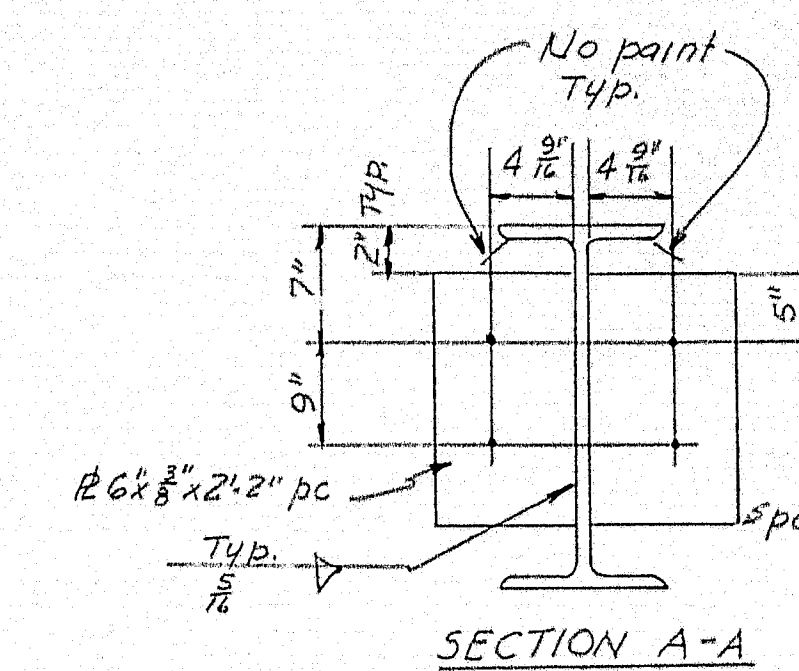
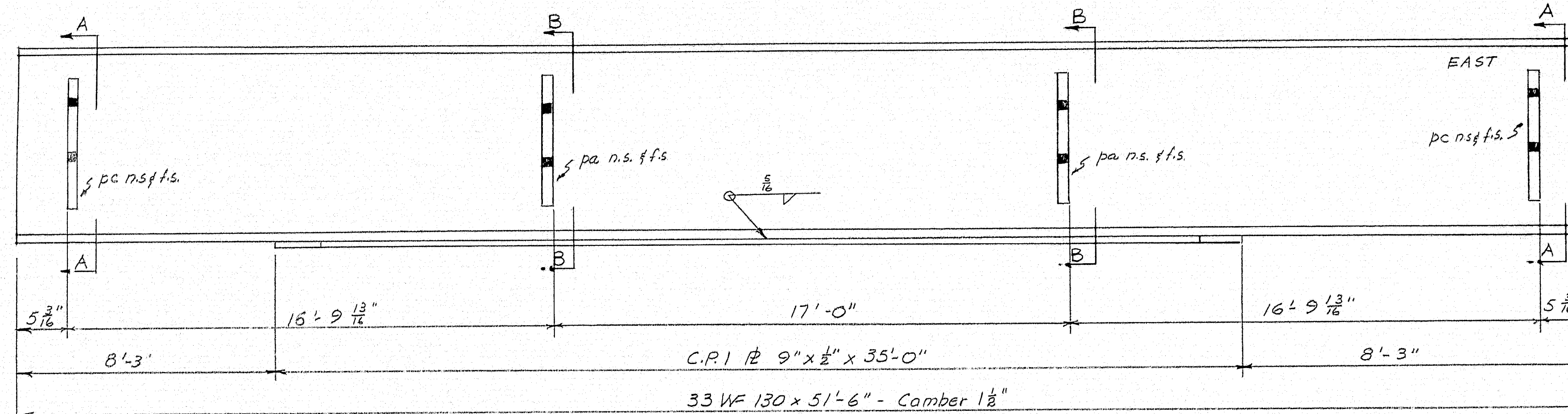
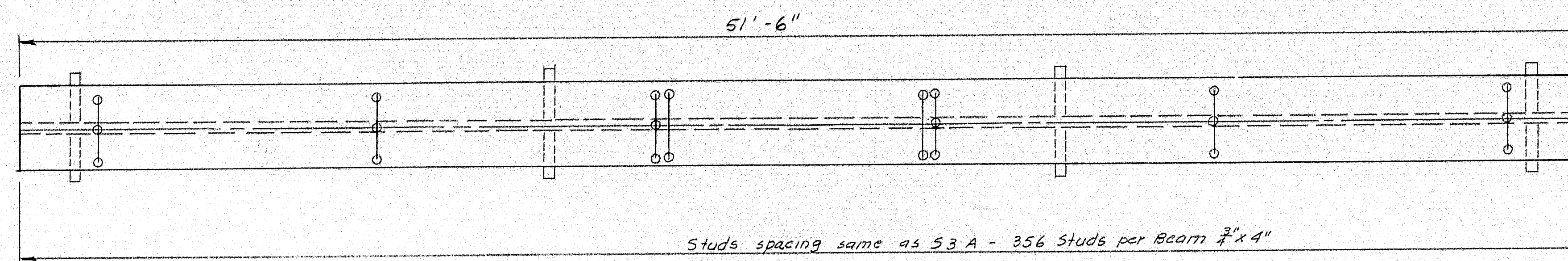
NOTES:
Holes 1 3/8" d Unless noted
Paint: Red Lead per M.H.S.C. Spec's.

See Dwg. 55 for Bill of Material

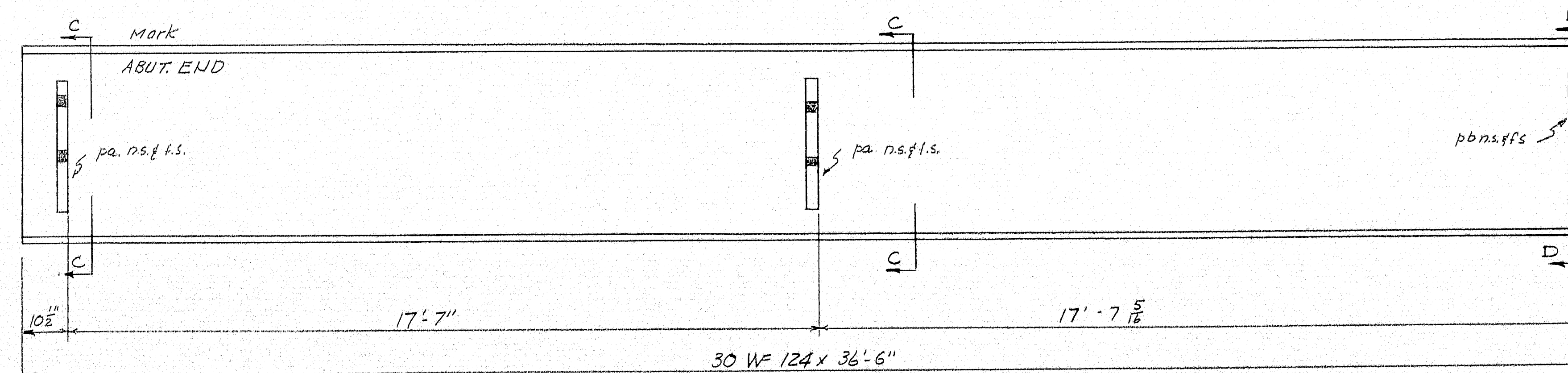
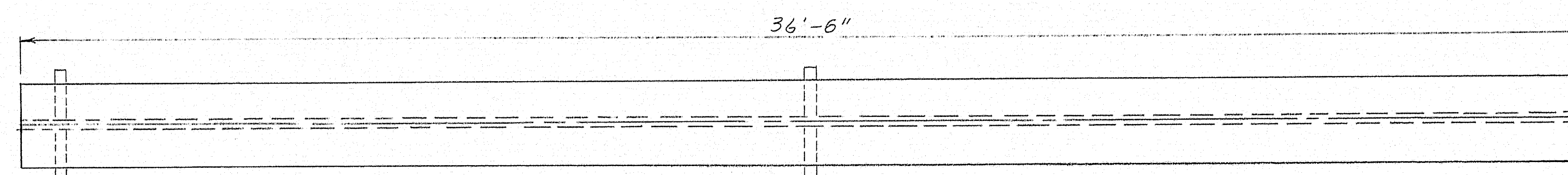
STEELERS	
Bancroft & Martin Rolling Mills Company	
South Portland, Maine	
WILSON STREAM BRIDGE	
over WILSON STREAM	
WILTON, MAINE	
CUSTOMER	W. H. Hinman Inc.
DESIGNER	Maine S.H.C. Bridge Div.
ORDER NO.	Verbal
DWG. NO.	60-601 S 3

DRAWN	G.Z.	3-3-61
REVISION		
REVISION		
REVISION		

APPROVED 3-10-61



No paint on pa, pb, pc



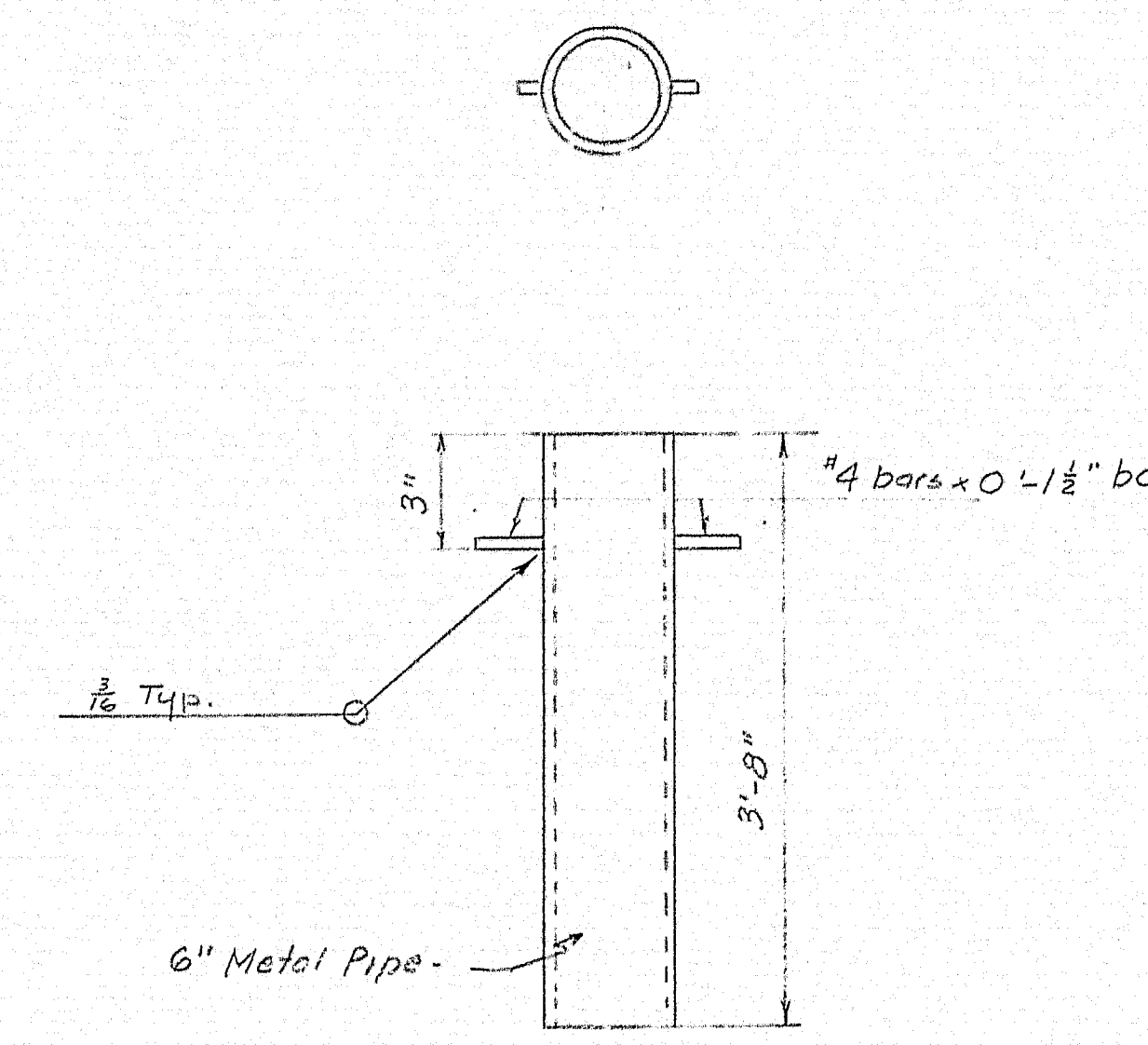
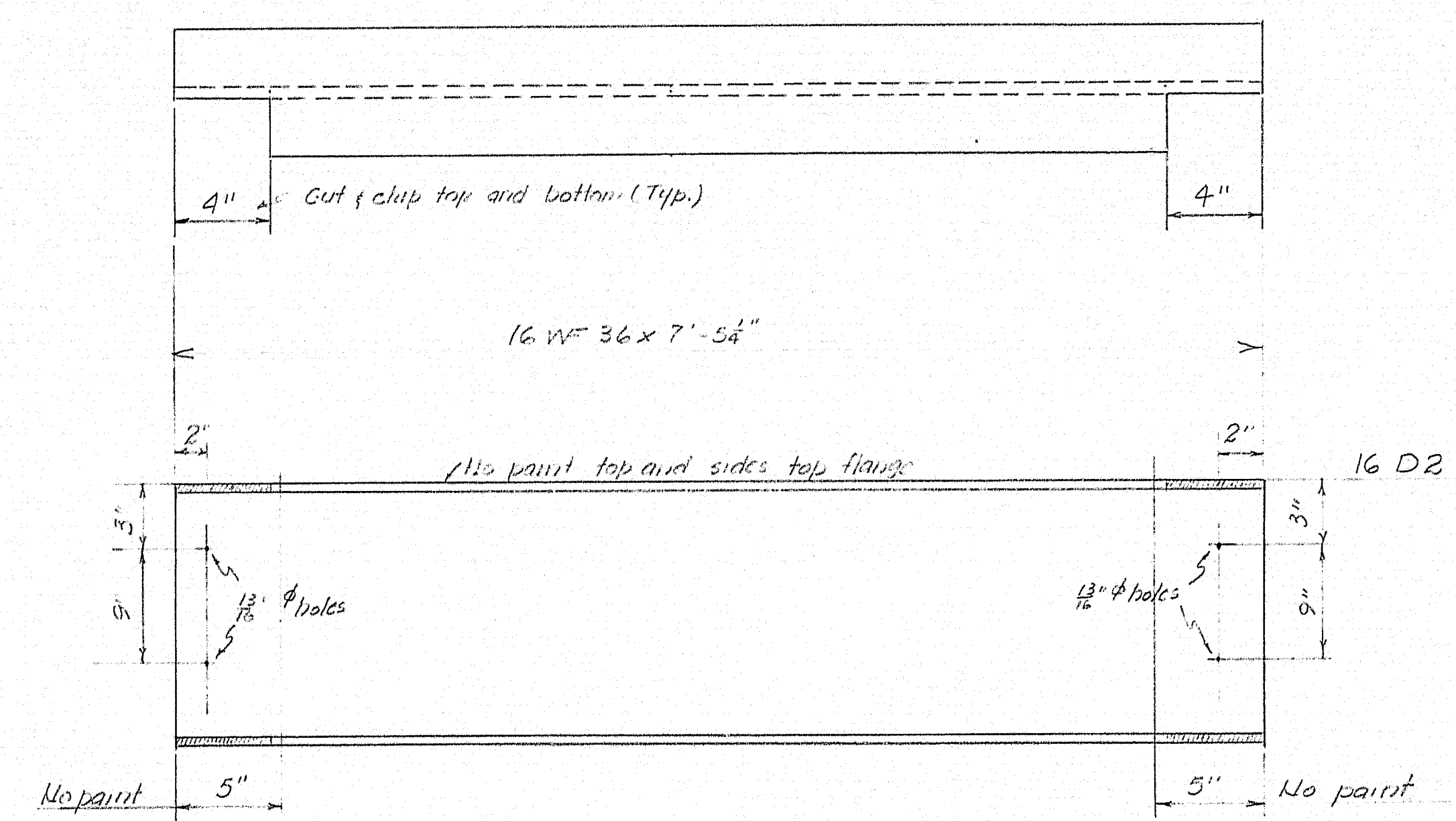
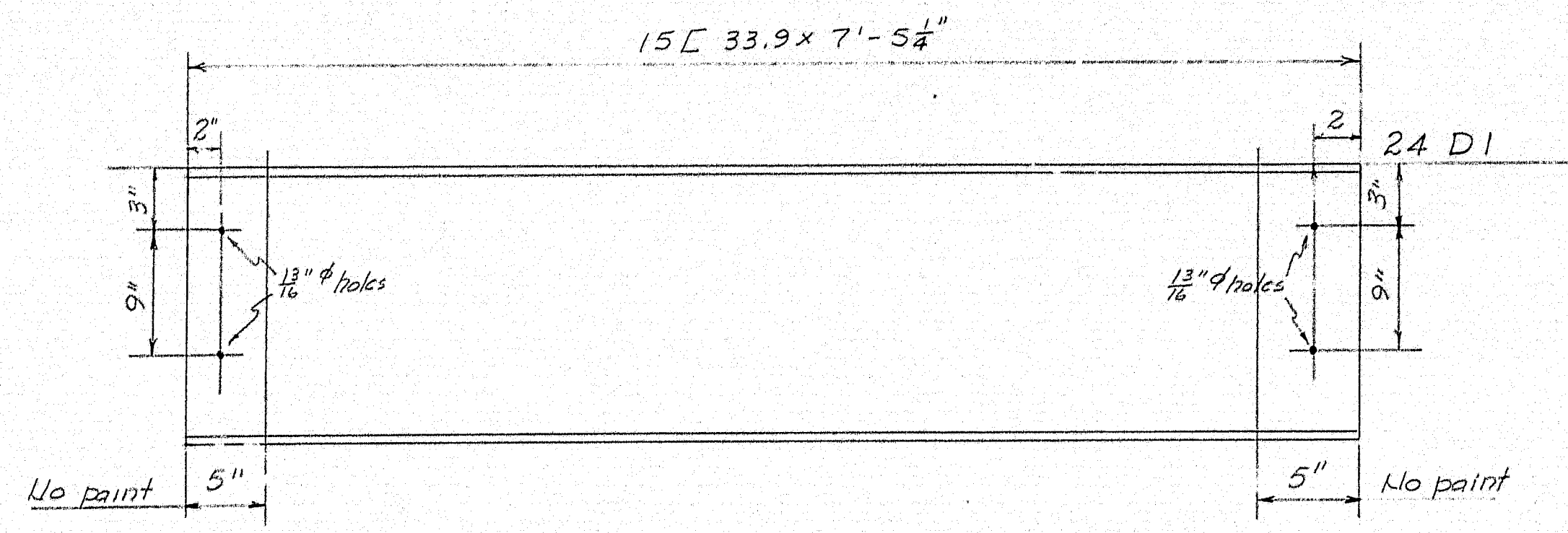
NOTES:
Holes: 13/16" unless noted
Paint: Red Lead per M.H.S.C. Specs.

See Dwg. 55 for Bill of Material

STRINGERS
Bancroft & Martin Rolling Mills Company
South Portland, Maine
WILSON STEAM BRIDGE
over WILSON STEAM
WILTON, MAINE

CUSTOMER W.H. Hinman Inc.
DESIGNER Maine S.H.C. - Bridge Div.
ORDER NO. Verbal DWG. NO. 60-601 - 54

DRAWN	GZ.	3-3-61
REVISION		
REVISION		
REVISION		



DRAIN DETAILS

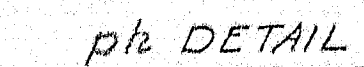
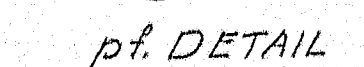
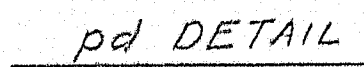
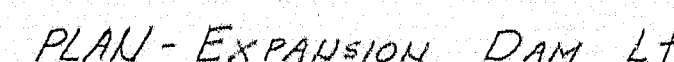
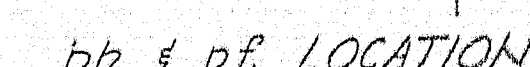
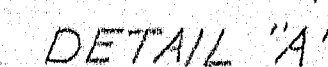
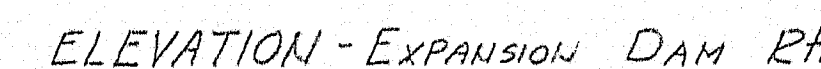
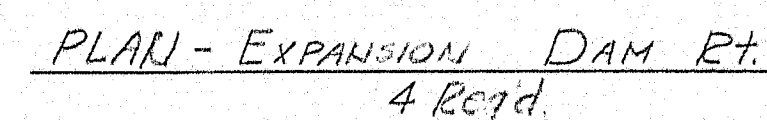
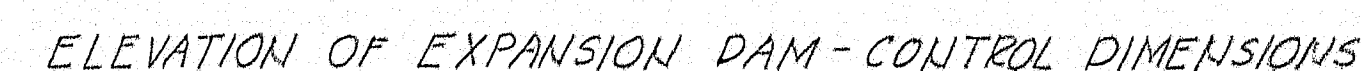
8 Req'd. DP
 8 pc. 3" x 3/8" x 0'-4" ba
 8 pc. 2" x 3/8" x 0'-4" bb
 For Drain Support

SHIP		BILL OF MATERIAL				DWG. NO. 60-601-55	
MARK	NO.	MARK	SHAPE	LENGTH	WT.	WT. Deduct	REMARKS
S1 A	2		30 W 124	36	6		ASTM-A 373
S1 B	2		do	36	6		do
S2	6		do	36	6		do
S3 A	1		33 W 130	51	6		do
S3 B	1		do	51	6		do
S4	3		do	51	6		do
D1	24		15 C 33 9	7	5 1/4		
D2	16		16 W 36	7	5 1/4	107	
	48	pa	F.B. 6 x 3/8	2	2		
	3	C.P.1	1/2 x 3/4	35	0	51	ASTM-A 373
	2	C.P.2	1/2 x 3/4	33	0	20	ASTM-A 373
	16	pb	1/2 x 3/4	2	2		
	16	pc	do	2	2		
DP	8		Metal Pipe	3	8		Wrough Iron
ba	8		bar 3 x 3/8	0	4		
bb	8		bar 2 x 3/8	0	4		
	16	bc	"4 bar	0	1 1/2		
	1	Shop	1/2" Fill Weld	689	L.F.		.166" per L.F.
Bolts	165		3/8" Mach	0	1 3/4		
do	60		3/8" Carriage	0	1 1/4		
	1780	Shop	3/8" Nelson Studs	0	4		61.5" per 100 - Lump Sum

This Bill of Mat'l. covers Drains 80-601-55 to 85 incl.
 All Mat'l. to be A.S.T.M.-A7 except as noted.
 +2.00% mean the allowable over weight of the plates.
 SHOP CONNECTIONS: Welded
 FIELD CONNECTIONS: Welded
 HOLES: As noted.
 PAINT: Red Lead for M.S.H. Specs

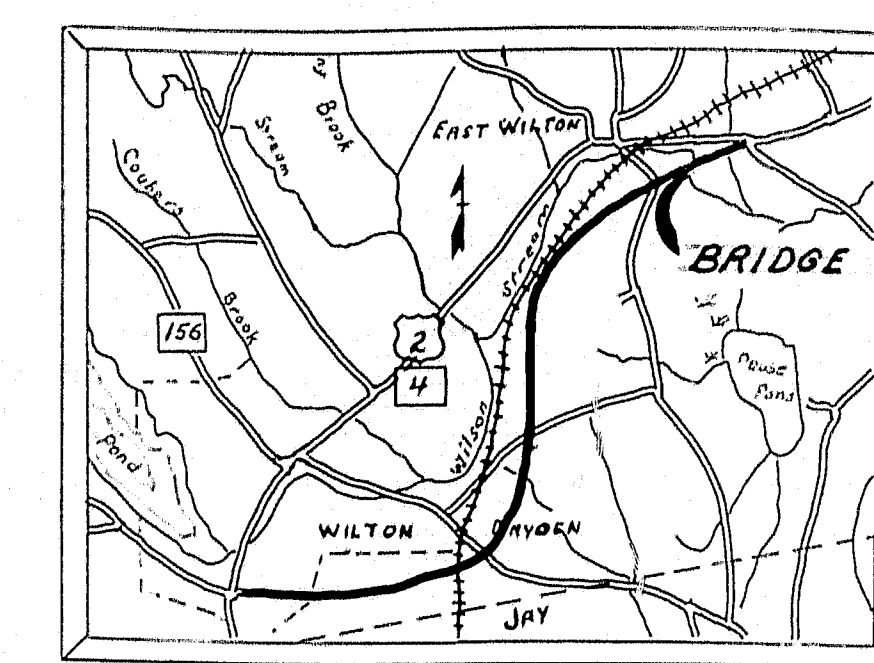
DIAPHRAGMS and DRAIN DETAILS
 Bancroft & Martin Rolling Mills Company
 South Portland, Maine
 WILSON STREAM BRIDGE
 over WILSON STREAM
 WILTON, MAINE

DRAWN	GZ	3-6-61	CUSTOMER	W. H. Hinman, Inc.
REVISION			DESIGNER	Maine S.H.C. - Bridge Div.
REVISION			ORDER NO.	Verba 1
REVISION			DWG. NO.	60-601-55



SHOP CONNECTIONS: *Welded*
FIELD CONNECTIONS: *Welded*
HOLES: *As noted*
PAINT: *Red Lead per M.S.P.C. specs.*

ORDER NO. <u>Verbal</u>	DWG. NO. <u>60-601 56</u>
-------------------------	---------------------------



LOCATION MAP
Scale: 1" = 1 mile

ENGINEER'S ESTIMATE

Item	Description	Units
204-10	Structural Earth Exc., Drainage	55 c.y.
204-14	Structural Earth Exc., Piers	230 c.y.
205-9	Granular Borrow	375 c.y.
404-29	Bituminous Concrete Surface Course, Type B	45 tons
701-33	Portland Cement Concrete, Abutts and Ret. Walls	88 c.y.
701-35	Portland Cement Concrete, Piers	277 c.y.
701-40	Port. Cem. Conc., Rdwy. and Sidw. Slabs on Stl. Bridges	165 c.y.
701-47	Portland Cement	740 bbls.
702-103	Structural Steel, Fabricated and Delivered	102,300 lbs.
702-104	Structural Steel, Erection	102,300 lbs.
702-105	Structural Steel, Field Painting	102,300 lbs.
703-9	Bronze or Copper Alloy Plates, Delivered	50 lbs.
703-10	Bronze or Copper Alloy Plates, Placing	50 lbs.
705-13	Reinforcing Steel, Delivered	46,625 lbs.
705-14	Reinforcing Steel, Placing	46,625 lbs.
705-17	Shear Connectors	Lump Sum
708-16	Steel H-Beam Piles, 10"H42#	1178 lin. ft.
803-7	Cofferdams, Piers	Lump Sum
806-7	Aluminum Rail	255 lin. ft.
807-9	Membrane Waterproofing	427 sq. yds.
905-32	Anchorage, Type "C" Guard Rail	4 each
907-10	Hand Laid Riprap	445 c.y.

DESIGN - PORTER DET. LIBBY
TRACE - LIBBY
CHECK - Harris

BRIDGE NO. SURVEY - PLOT -

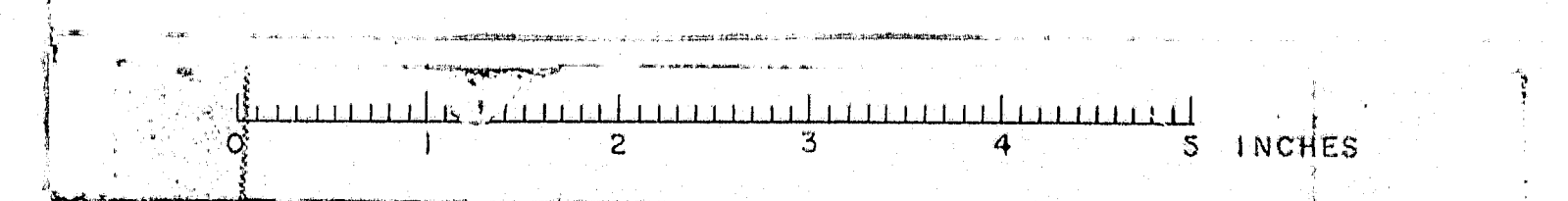
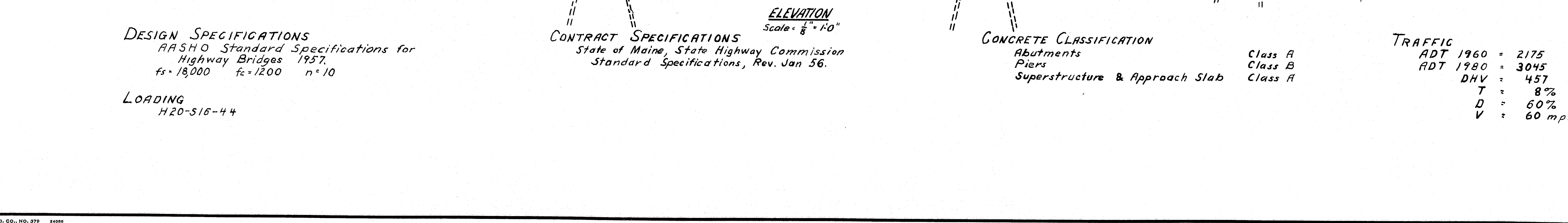
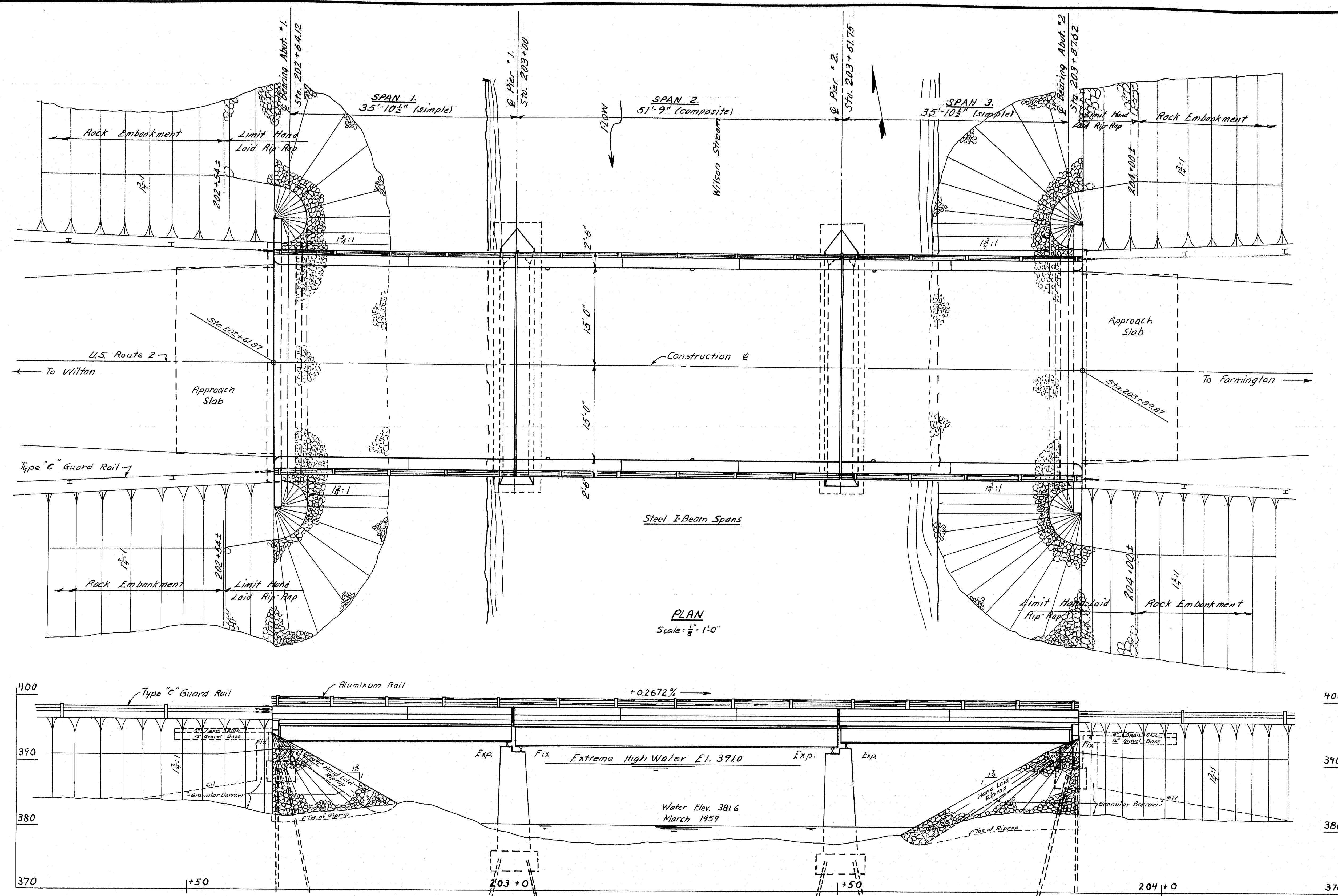
STATE HIGHWAY COMMISSION
BRIDGE DIVISION

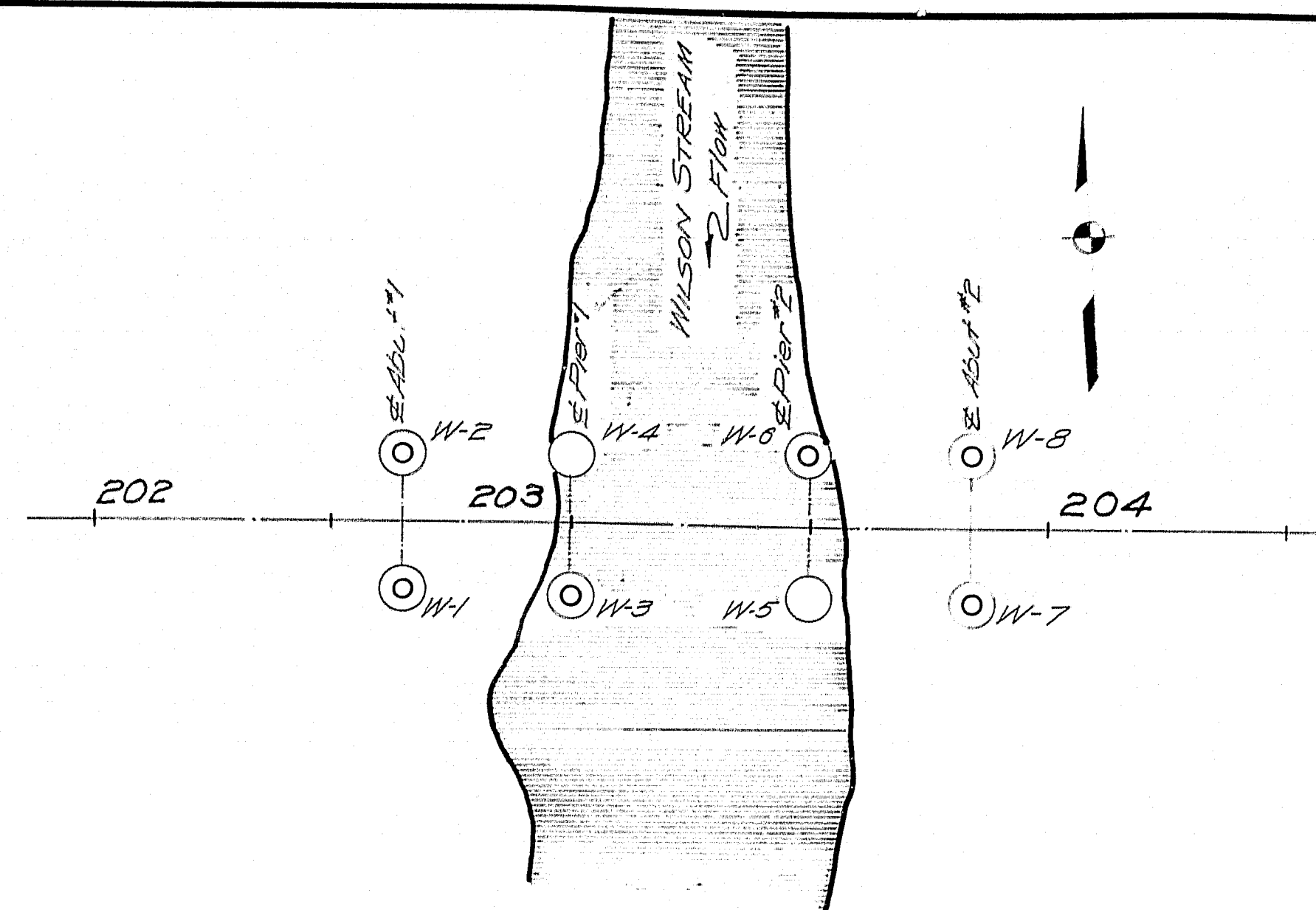
WILSON STREAM BRIDGE
OVER

WILSON STREAM
IN THE TOWN OF
WILTON
FRANKLIN COUNTY
GENERAL PLAN

SHEET 2 OF 11 AUGUSTA, MAINE MARCH 1960

M-1644





PLAN

BORING NOTES

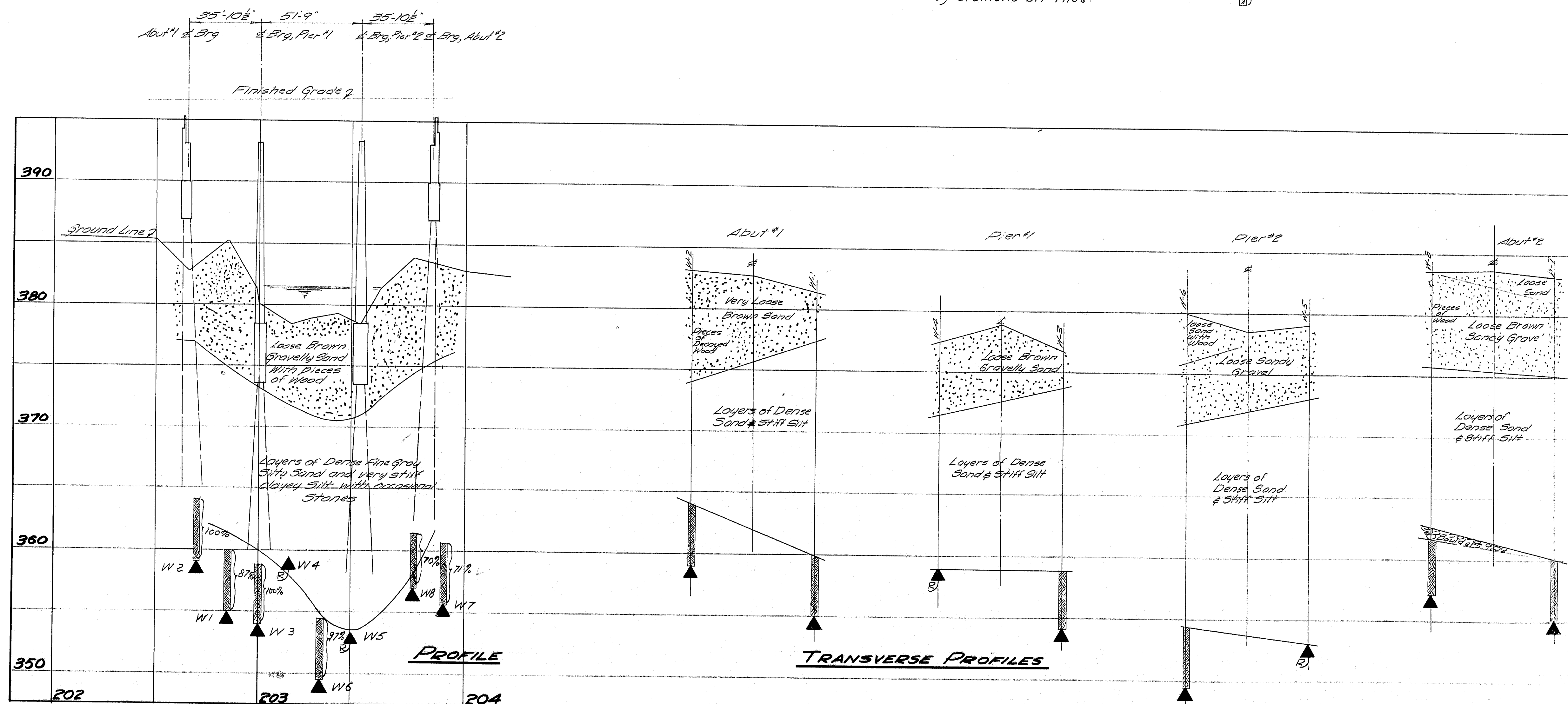
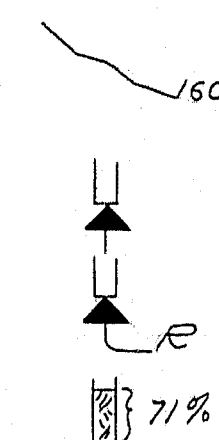
Boring

Sounding

Number of blows of 275# hammer falling 18 inches required to drive extra heavy casing one foot thus (borings only):
Bottom of boring indicated thus:

Refusal of drill rods or casing indicated thus:

Percent recovery of rock core by diamond bit thus:



PROFILE

TRANSVERSE PROFILES

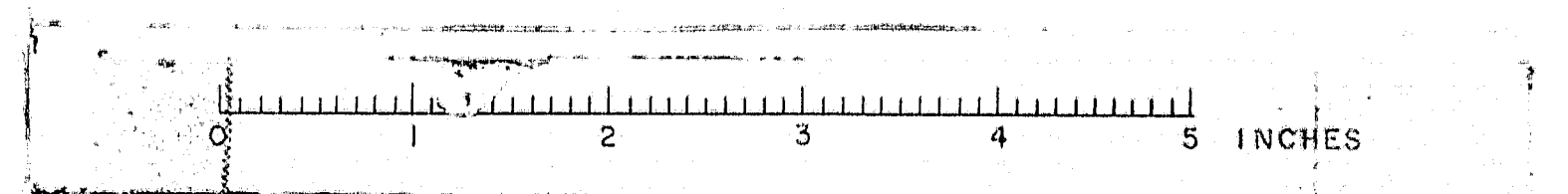
DESIGN - BOYCE
TRACE - CHASE
CHECK - V. S. H.

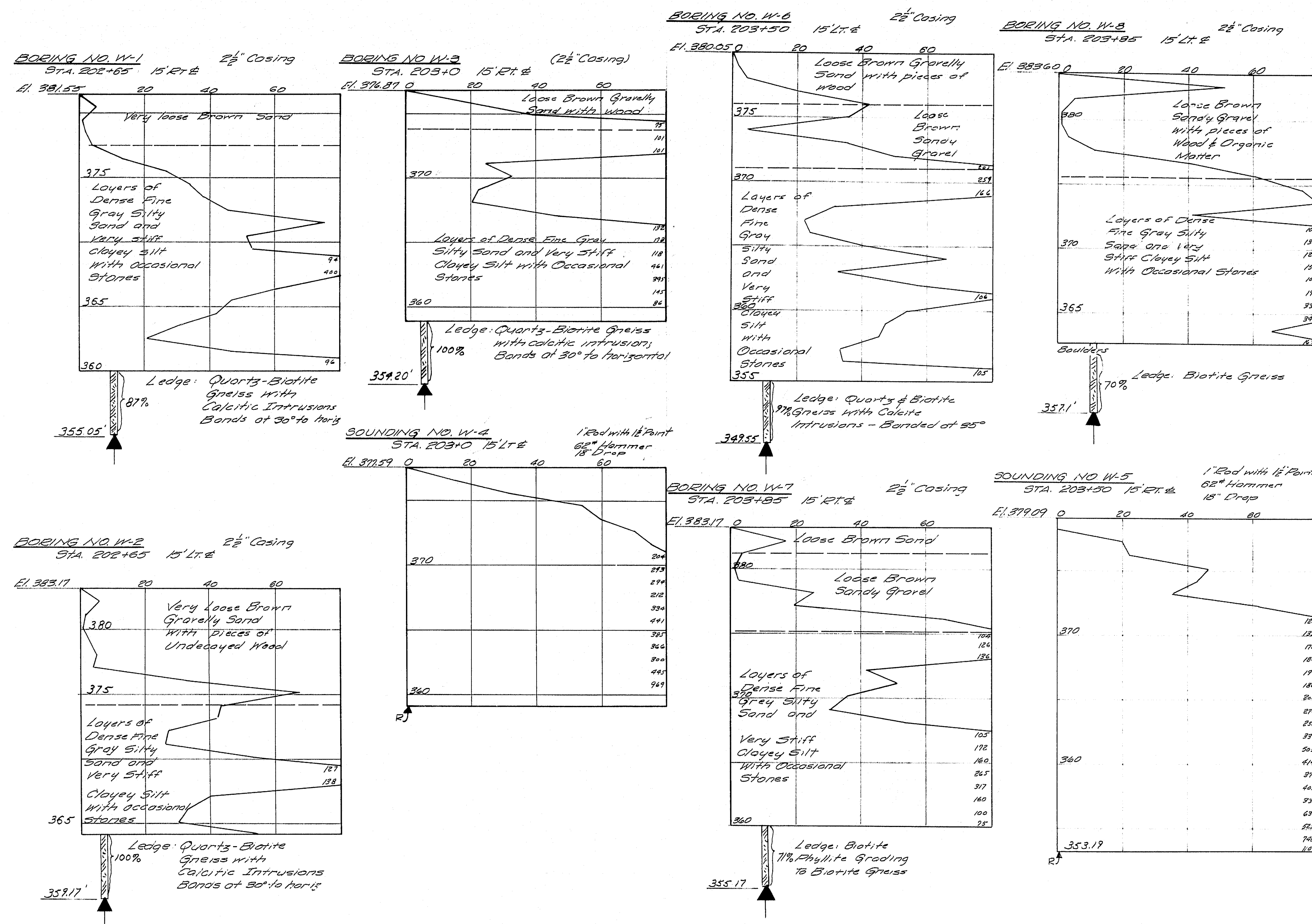
BRIDGE NO.
SURVEY -
PLOT -

STATE HIGHWAY COMMISSION
BRIDGE DIVISION
WILSON STREAM BRIDGE
OVER
WILSON STREAM
IN THE TOWN OF
WILTON
FRANKLIN COUNTY
SOILS SURVEY

SHEET 3 OF 11 AUGUSTA, MAINE MARCH 1960

M-1645





DRIVING RESISTANCES
(Blows per Foot)

DESIGN - BOUCE
TRACE - *[Signature]*
CHECK - *[Signature]*

BRIDGE NO. 1
SURVEY - *[Signature]*
PLOT - *[Signature]*

STATE HIGHWAY COMMISSION
BRIDGE DIVISION

WILSON STREAM BRIDGE
OVER
WILSON STREAM
IN THE TOWN OF
WILTON
FRANKLIN COUNTY
SOILS SURVEY

SHEET 4 OF 11 AUGUSTA, MAINE MARCH 1960

M-1646

